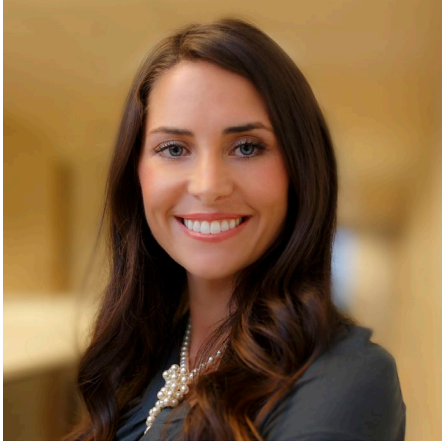


*Lauren Reber is a shareholder in the Real Estate, Banking and Finance Groups. Her transactional practice focuses on assisting clients with all aspects of real property including real estate purchase, sale and development (including entitlements); zoning and permitting; financing and loan documentation; commercial and industrial leasing; and alternative energy projects.*



## S. Lauren Reber

Shareholder | Salt Lake City

### Biography

Lauren Reber is a member of the Real Estate and Banking & Finance practice groups at Parsons Behle & Latimer. Her practice focuses on transactional work associated with all aspects of real property including real estate purchase, sale and development; zoning and permitting; financing and loan documentation; and commercial and industrial leasing. In connection with these transactions, her practice involves associated land use (including entitlements), mineral rights and regulatory matters.

Ms. Reber assists clients in the purchase and sale of different types of real property, including commercial buildings, industrial properties, large residential properties, resort properties and unimproved land. Her practice includes a broad range of land use and regulatory matters, including zoning, real estate, natural resources, infrastructure and development. She represents developers in obtaining entitlements from local governments as well as represents property owners in the negotiation, siting, and acquisition of commercial, industrial, and residential developments; obtaining water rights, utilities, and rights of way; title review and resolution of title defects and disputes; and advising on sales of properties ranging from single parcels to large, multi-phased and multi-use developments. She represents master developers in negotiations related to infrastructure development and land use.

Ms. Reber has been involved with the development of multiple utility scale solar and wind energy projects. She has assisted in the representation of the developer and operator in some transactions, and the tax equity investor in other transactions,

### Contact information

801.536.6731

[lreber@parsonsbehle.com](mailto:lreber@parsonsbehle.com)

### Capabilities

Real Estate

Natural Resources, Real Estate & Renewable Energy Taxation

Transactions & Financing

### Licensed/Admitted

Utah

**EXCEPTIONAL RESULTS  
EVERY DAY**

of multiple solar energy facilities and one wind energy facility in Utah, which representation included the negotiation and documentation of acquisitions, land leases and easements, project finance transactions as well as permitting, land use, and entitlements.

## Experience

### Entitlement and Development of Mixed-use Project

Lead counsel on 89-acre mixed-use development in Summit County, including residential, workforce housing, office, retail and hotel space.

### Facilitated Deal to Install Largest Solar Array in Montana

Represented SAROC Energy, LLC in a first-of-its-kind deal in Montana with third-party financing between SAROC Energy and Missoula County to design and install a \$450,000 solar array - the largest behind-the-meter array currently known in Montana. The deal provides SAROC Energy, LLC to benefit from tax advantages the county cannot while the county is enabled to install an energy-saving system without a major initial investment. Full press release.

### Entitlement and Development of Major Retail and Hotel Development

Lead counsel in the entitlement and development of an 89-acre mixed-use development in Park City and Deer Valley, Utah which includes a combined 1,086 units and 311,000 square feet of retail and hotel development.

### Development and Sale of 459 Residences

Served as lead counsel in the entitlement, site development and sale of all development parcels of Park City Mountain Resort and Canyons Village, including Pendry Park City; Apex Park City; and YotelPAD - a combined 459 residences.

## Accomplishments

### Academic

Brigham Young University, J. Reuben Clark Law School (J.D., 2012)

- Cum Laude

Westminster College, 2006

- Summa Cum Laude

## Associations

### Professional

Women Lawyers of Utah  
Member (2012)

J. Reuben Clark Law Society  
Member (2009 - Present)

Utah State Bar  
Member

American Bar Association  
Member

**EXCEPTIONAL RESULTS  
EVERY DAY**

**PARSONS  
BEHLE &  
LATIMER**